



**Caroline
Chisholm
Society**

Newsletter

Summer Edition - Feb 2016

Do you have clothes for pre-school age children?

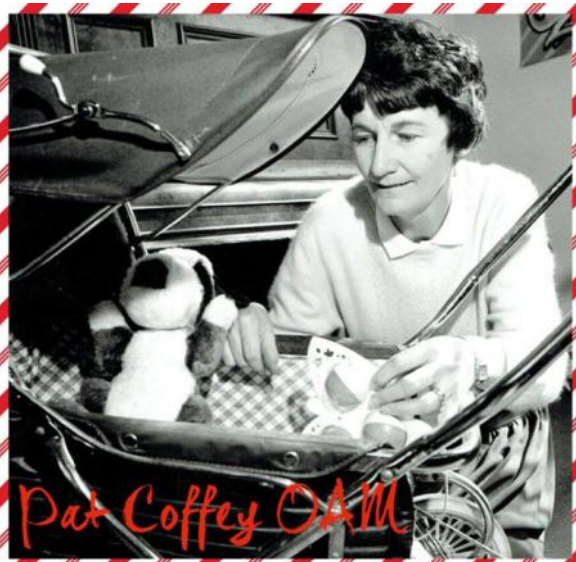
Our Moonee Ponds office is very low on clothes for children sized 3-5. Please donate on Fridays!



This is the cover of our Autumn 1996 newsletter.

Our Bonnet and Shawl stall, on that front page, still runs in Niddrie and on Puckle Street in Moonee Ponds on alternating fortnights.

See our more recent newsletters at: www.caroline.org.au/news



From the CEO

We are all linked to Caroline Chisholm Society because we want to make a difference in the lives of new and expectant families. We all know, most of the time, we're doing it for all the right reasons. To help them achieve a safe and nurturing environment for their children.

There are highs—like the times when we do indeed make a difference for those who are struggling with parenting, are unsure about their pregnancy or are facing difficulties with isolation, violence, homelessness or their mental health. There are lows—like when we can't gather the resources we need, or the client simply can't change their behaviour, or we get distracted by administrative issues. And then, there are rare occasions when we're all reminded that we're 'part of something'—That happened earlier this year.

This year, Pat Coffey received national recognition for her service to Seymour and Shepparton, with a particular focus on her work with Caroline Chisholm Society. Now with OAM after her name, Pat founded a vital pregnancy support group in the days before there were other services available. As the editor of the *Shepparton News* said, "...she saw a hole in the social care system, and without a thought of financial gain spent her time establishing a support group..." and "[t]he clear need for such a service is evident in its continued existence to this day."

in its continued existence to this day."

Thank you, Pat. And thank you to all our other long standing members, volunteers and supporters. We couldn't have kept up the work Pat and others did in our early days without you with us along the way.

In the spirit of Caroline Chisholm,

Helen
Helen Cooney

Volunteering?

We are always looking for new volunteers at all three of our offices.

To express interest in volunteering in Melbourne, please contact:

03 9361 7000
secretary@caroline.org.au

To express interest in volunteering in Shepparton, please contact:

03 5821 0826
gv@caroline.org.au

Mothers In Mind



Last year, in partnership with the University of Melbourne and the City of Melton we offered training in a program called 'Mothers in Mind'.

This year, we're running it with McAuley Community Services for Women with the support of the Western Integrated Family Violence Partnership.

For information call Samantha Sacco or Aziza Elhila on 9361 7000



Are you on Facebook?

Please share our posts and invite your friends to like us too!

Spotlight on...

977 Mt Alexander Road
It's actually being built! It's timely to remind ourselves of the amenity we'll have at Essendon.

Our new office will be opposite a tram stop, close to two train stations (Essendon and Glenverbie) and a short walk from the North Essendon bus stops. There is also short term on street parking and longer parking nearby.

When you arrive, you will be welcomed without having to ring a door bell as you will be seen from reception as you enter. That's great for those of us who are mums with prams and those of us often carry goods inside. In the front of house, there will be a spot for the goods for our volunteer run stall. Nearby are three sizable consulting rooms. One has storage to allow the room is to suit distributing new and pre-loved baby and maternity goods through welfare appointments.

From the front of house, you will be able to either go upstairs (or up the lift) to office space and a full kitchen. Or, you will be able to go through to a dividable group room with kitchenette. On one side of



that group room there will be storage and sorting facilities for new and pre-loved goods and space to store things for group work. If there are people in that area, we will be able to divide it so that a parenting group can operate in half of the room. Further on, through the building, one will be able to access an outdoor yard where we'll have goods that are not yet processed as well as a highly efficient washer and dryer.

We hope it will be ready for us to move in to later this year.

Vicarious trauma made the news recently...

Vicarious trauma is the debilitating emotional and psychological impact of connecting with the traumatic and disturbing life events of other people.

See more: www.mauriceblackburn.com.au/blog/2016/february/12/vicarious-trauma-identifying-the-warning-signs

Contact us ...

1 Darebin Place
Caroline Springs 3023
T: 03 9361 7000
F: 03 9361 7099

12 Shuter Street
Moonee Ponds 3039
T: 03 9361 7000
F: 03 9326 1045

15A St Andrews Road
Shepparton 3630
T: 5821 0826

E: secretary@caroline.org.au
W: www.caroline.org.au