



## Supporting women in the Moonee Valley, from 12 Shuter Street, Moonee Ponds



The Caroline Chisholm Society is offering its pregnancy counselling and support appointments at a leased property at 12 Shuter Street, Moonee Ponds.

This is a temporary home for the Society while we await settlement, planning, works and fundraising on our new property at 977 Mount Alexander Road.

The site allows those families who need new and pre-loved goods for pregnant women or young children to access our support near public transport and allows us to continue to serve clients in the local area.



### Want to Volunteer?

We need helpers on Fridays at Moonee Ponds. Contact Glenda Rumble, above, on 03 9361 7000 or go to our website. Details over page.

### Ideas for our strategic plan?

Submit your views to  
[secretary@carolinechisholmsociety.com.au](mailto:secretary@carolinechisholmsociety.com.au)

We seek to support women with their pregnancy, children and families. Over the next few years, we'd like to focus on volunteers and the support they give to our clients.

**Parenting groups will run in  
Term 2 and supported play-  
groups will run in  
Term 4 of 2013.**

**Funded by Melton Council and  
DEECD, details to follow!**

**Pregnant?  
Young family?  
Stressed?**

**Caroline Chisholm  
is here for you.**

The Caroline Chisholm Society supports pregnant women and families who have children under school age.

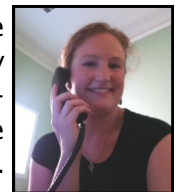
For free and confidential information, support and referrals ask for the duty worker on:

- (03) 9370 3933, or
- 1800 134 863 (Country Vic)

Or visit us between 9 am and 5 pm, weekdays at 12 Shuter Street.

### From the CEO

It's a great time to get pregnancy and family support on the state-wide agenda. The Victorian



Government has released several discussion papers worth responding to, but two are about reviews of particular interest to us.

The first relates to sector reform. It aims to move "Towards a more effective and sustainable community services system". The review is being led by Dr Peter Shergold and VCOSS are running the consultations.

The second is about housing, a critical issue for young vulnerable families. We will need to keep our eyes peeled for how the government will run the Victorian Homelessness Action Plan System Reform Project.

In Caroline Chisholm's spirit,

**Helen Cooney**

**Chief Executive Officer**

## An interview with volunteer, Madelyn Kelcey



When doing the Duke of Edinburgh's Award, high school students are told, "Connect with your community and realise your passions." The Caroline Chisholm

Society is grateful for the help of DoFE participants to manage parts of our material aid program. Madelyn is a Lowther Hall student who was bailed up by the CEO on day one to be interviewed for this newsletter.

**What brings you to the Caroline Chisholm Society?** I am doing my gold DoFE Award and, to finish it, I need to do service in the community. A couple of my friends, Hannah and Jenny, came here last year and worked once per week and recommended Caroline Chisholm Society. **What did they tell you about the**

**Caroline Chisholm Society?** They enjoyed coming and think it's a worthy place. They were particularly interested in helping women that are in need. **What are you doing here today?** Unpacking the kitchen, and if that's done, I'll move onto the stationary cupboard. **What was the first thing you noticed about Caroline Chisholm?** Firstly, that you'd just moved. I noticed the boxes everywhere and the baby clothes - they were nice. And as I got to the back, the number of boxes of food. **It's two days before we open for clients at 12 Shuter Street, so Madelyn is living the challenges of a move with us. Thanks Madelyn! What are the other things you're doing this year?** I'm playing tennis. I've played for nine years. I play for the School and a club. I'm also in Year 11, so I'm doing my subjects. They are English, mathematics, legal studies, psychology and PE (physical education). **Will you be doing any tennis**

**in PE?** Not really. our PE is about the body, whereas tennis is my sport. **What are you learning in psych? I'm interested because we do pregnancy counselling and support here at Caroline Chisholm.** I'm learning how the mind works, in relation to human behaviours and mental processes, and how the two are different. Next week we'll dissect an eye, I'm a bit unsure of that. **An eye of what? A cow.** **Phew! Better clarify that for our readers. Thanks Madelyn and welcome to the team.**

Interviewed by Helen Cooney.



**Caroline Chisholm, an inspiring social reformer, appears in our Reception at 12 Shuter Street.**

## Spotlight on ...



**Gabriella Hendricks** has joined the Society as our new Manager of pregnancy and family services. She directly leads the team of case workers at Caroline Springs and, with the committee in Shepparton, oversees our operations in the Goulburn Valley. She is also the first port of call for the community sector in the Brimbank and Melton areas, and is a member of early years networks in both the city of Melton and of Brimbank. She's also in touch with local maternal and child health centres and maternity wards. Gabriella guides policy and practice with Audrey Ciaparra for our client related work in the Moonee Valley. Gabriella came from leading a team of seven family ser-

vices workers at CatholicCare in Footscray and has also worked for Anglicare. She has been a manager of complex cases for almost 30 years, including out of home care.

Gabriella's student days were at the University of Melbourne, from where she holds a Bachelor of Arts and a Bachelor of Social Work. Her expertise and experience complements the management team of Audrey (our team leader of pregnancy and family services), Marie (our finance and property manager) and Helen (our CEO). Gabriella brings lots of experience with Volunteers from her time working in foster care, and correctly guessed Caroline Chisholm's year of birth when the Society was being quizzed by Tess Fogarty at our Volunteer Christmas Party.

## Contact us ...

1 Darebin Place  
Caroline Springs 3023  
T: 03 9361 7000  
F: 03 9361 7099

12 Shuter Street  
Moonee Ponds 3039  
T: 03 9361 7000  
F: 03 9326 1045

16 Broomfield Street  
Shepparton 3630  
T: 5821 0826

E: [secretary@carolinechisholmsociety.com.au](mailto:secretary@carolinechisholmsociety.com.au)  
W: [www.carolinechisholmsociety.com.au](http://www.carolinechisholmsociety.com.au)